

# Edge Print

## Loading New Media Profiles



### Adding new media profiles into Edge Print & Printer

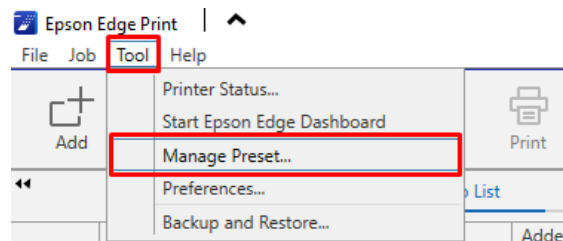
You can manually add Media on the Printer and run an Auto Media Setup but that will only add the physical media properties in the printer and you will need to manually type the profile using the printer screen. Then you use the generic Edge Print media profiles for the colour profile (icc)

Alternatively you can add the media using the Edge Print Dashboard, again this will only install the physical properties to the printer via a database download. But allow you to type the names, so a slightly quicker process. It is recommended to still run the Auto Media Setup on that media to confirm the physical dimensions.

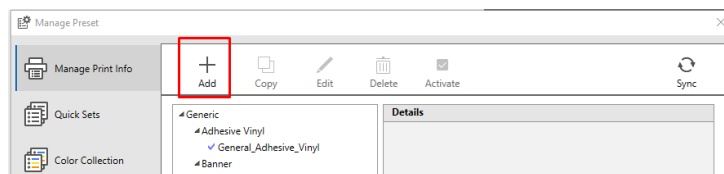
The best process is to load your new media via Edge Print. This will load all the info from an EMX file from a world database of media profiles. The EMX file has the physical properties of the media for the printer, but also has a colour profile (icc) that will load into Edge Print. When printing you then can be confident the colours are correct based on the media's specific white point. It is still recommended to Auto Media Setup once the process is loaded to double check the physical properties, this is only required on the initial setup. Not every media will have an emx file, so you can use one of the first two methods in that case. If you are seeing colour shifts from the media white point being too warm or cold then you will need to setup a custom profile for that media.

### The Process

In Edge Print Click **TOOL > MANAGE PRESET....**



Click the + Sign on the next dialogue screen

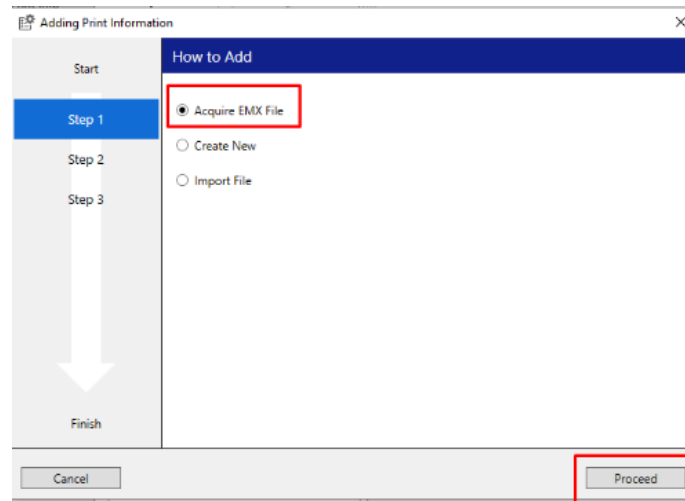


# Edge Print

## Loading New Media Profiles

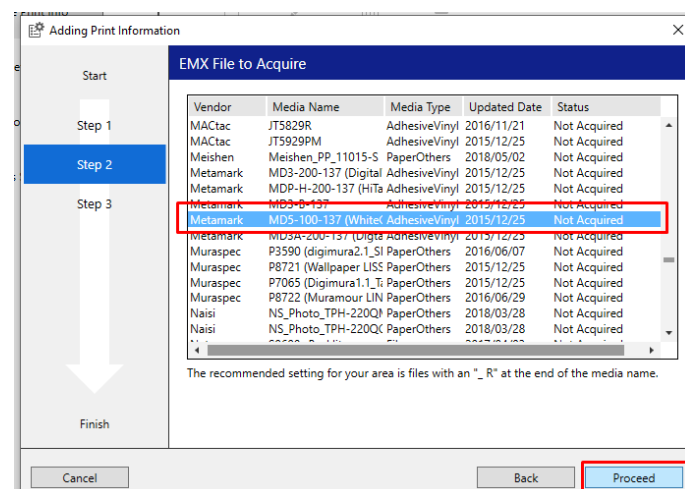


Then Acquire EMX File > Proceed This may take a minute to load the next screen.



Find and select the media type and then click Proceed.

**Note:** Not all medias are here. If the media you are looking for is not here then start with doing an Easy Media Setup on the printer and then using the generic Media Profile in Edge Print. If colour is off then you can either create your own profile, or you can use a similar media from the available emx file list.

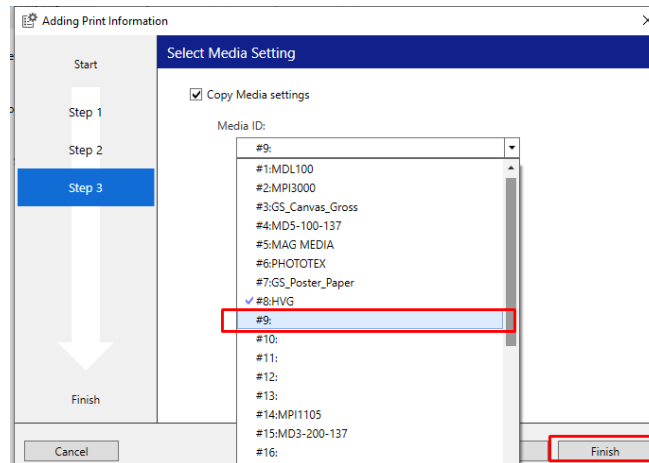


# Edge Print

## Loading New Media Profiles



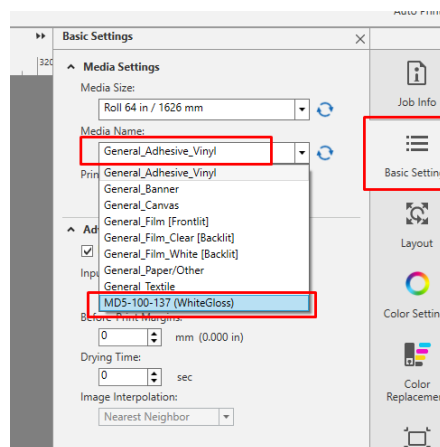
Choose the # from the drop-down menu where you want to install on the printer. And hit finish.



This will install the media profile to the printer and in Edge Print.

When loading the media in the printer you will then be able to select the profile from the list at #9 in this example. Ready to then print in Edge Print.

In Edge Print with your artwork loaded under the **Basic Settings** tab select the profile downloaded from the **Media Name** Drop down box. This will then use the appropriate settings and colour profiles to get you the best results for that media.



To browse our other Help Files, please head to Graphic Arts Supplies Help Centre <https://graphicartshelp.zendesk.com/hc/en-us>